

CAPTO gen3

A renewed
Capto product

LAUNCH DATE

Jan 2024





New package
all you need inside



Traveling made easy

SOLID AND LIGHT

The same sturdy case of Capto ,
but bigger in size

Black box size:
22 cm x 12 cm x 5 cm
Weight:
700 grams

Battery interchangeable

battery life:

Up to 120 minute
each

3 batteries
included and
charger



Use charger to charge extra batteries





Standalone
or
connected
to the app

sensor dimension

dimension:

Size: 57 mm x 30 mm x 25 mm

weight:

53 grams /1.86 oz



Set up and calibrate with Cube



Cube fixage with rubber band



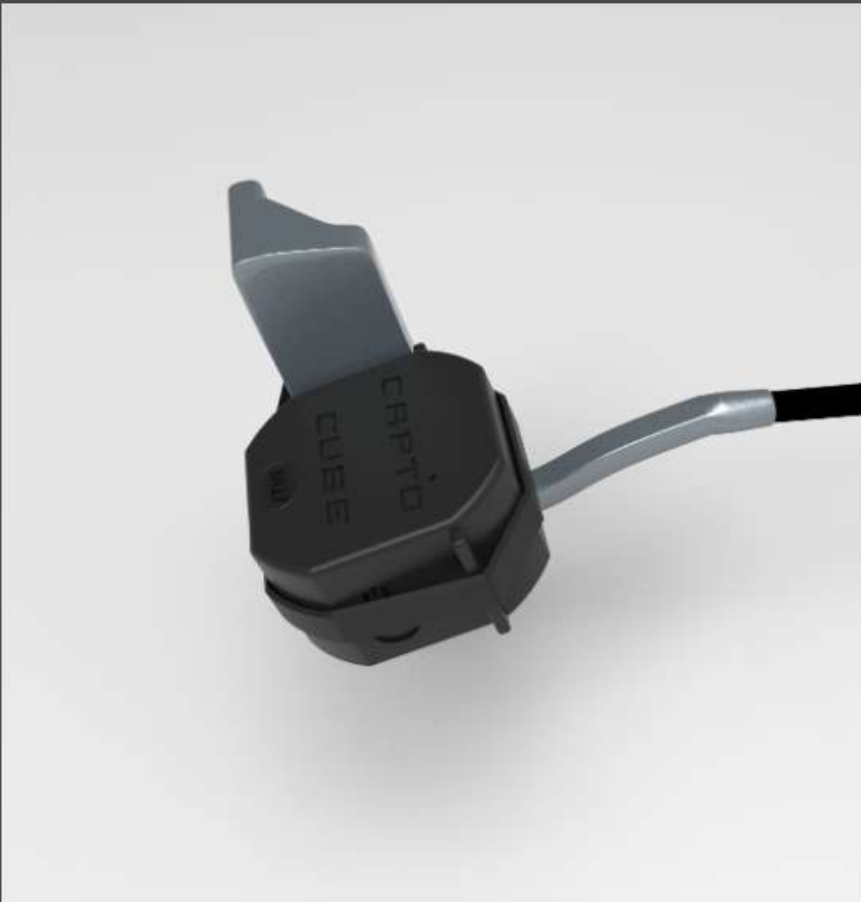
Cube for
face alignment
and loft lie
measure



CUBE OPERATION



STEP1



Turn on the cube, a blue light will blinker. Fix the Cube device to the putter with the appropriate elastic support or any other rubber band, make sure that the putter's face and the cube's face are in close contact and positioned as in the figure.

STEP2

SCANNING DEVICES..

CONNECTED



Bring the putter to a horizontal position(laying it on the green or on a table), press start to begin the procedure wait for the connection.

STEP3

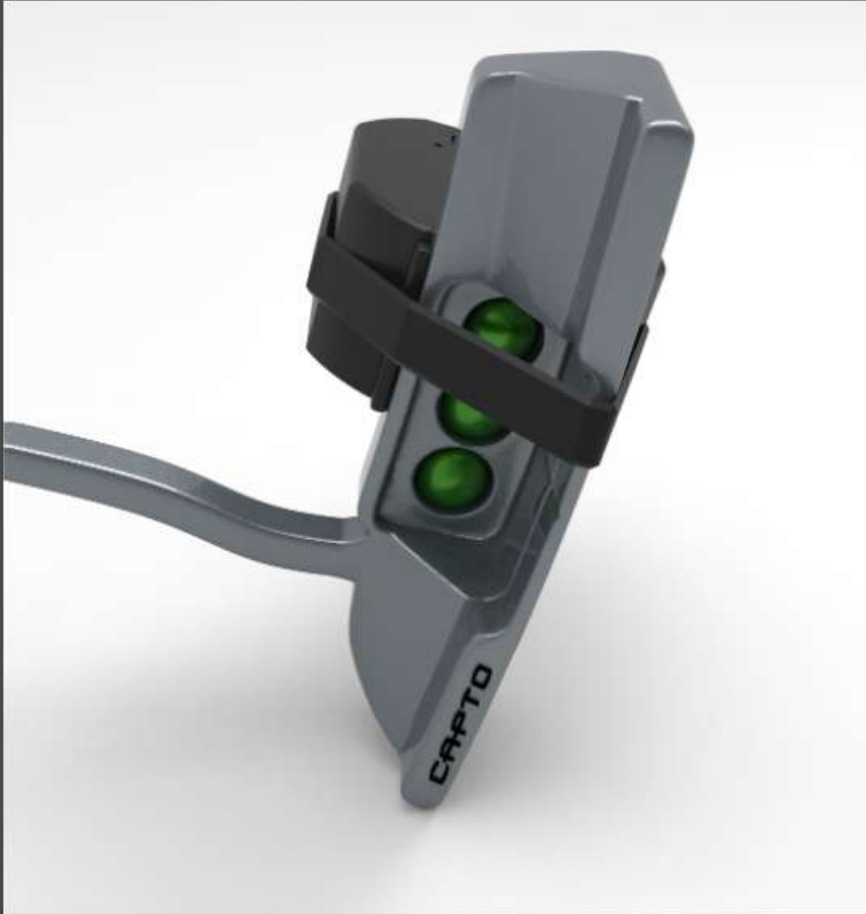


Rotate the Capto sensor as indicated until it is aligned. Fix it gently. Wait 3 seconds in position, the procedure is complete.

CUBE LOFT LIE



STEP1



Turn on the cube, a blue light will blinker. Fix the Cube device to the putter with the appropriate elastic support or any other rubber band, make sure that the putter's face and the cube's face are in close contact and positioned as in the figure.

STEP2

SCANNING DEVICES..

CONNECTED



Press start to begin the procedure wait for the connection.
Bring the putter to a horizontal position to measure the putter LIE (laying it on the green or on a table).
Bring the putter to the play position but raised from the ground to measure the putter LOFT.

Loft



Lie



Wait 3 seconds in position trying not to move the putter, the procedure is complete.

TARGET EXPRESS renewed feature

Step 1



Place the ball on its position.
Take your address and aim to the hole
adjusting the stance. Keep the position to
automatically proceed to the next step.

Motion Detected, please don't move

AIM	IMPACT	CHANGE
-1.2	+0.9	2.1

Last Stroke

Lift The Putter Up to Start 

TARGET EXPRESS renewed feature

Step 2



Without changing address move the putter face close to the back side of the target bar then wait for the beep to record zero

Motion Detected, please don't move

Go to the expected value of Shaft

Expected Shaft Lean: -6

Current Shaft Lean: 3

Difference: -9

TARGET EXPRESS renewed feature

Step 3


Target Life Time

5 s

×

i

READY TO PLAY



LAST STROKE

AIM	IMPACT	CHANGE
-1.2	+0.9	2.1

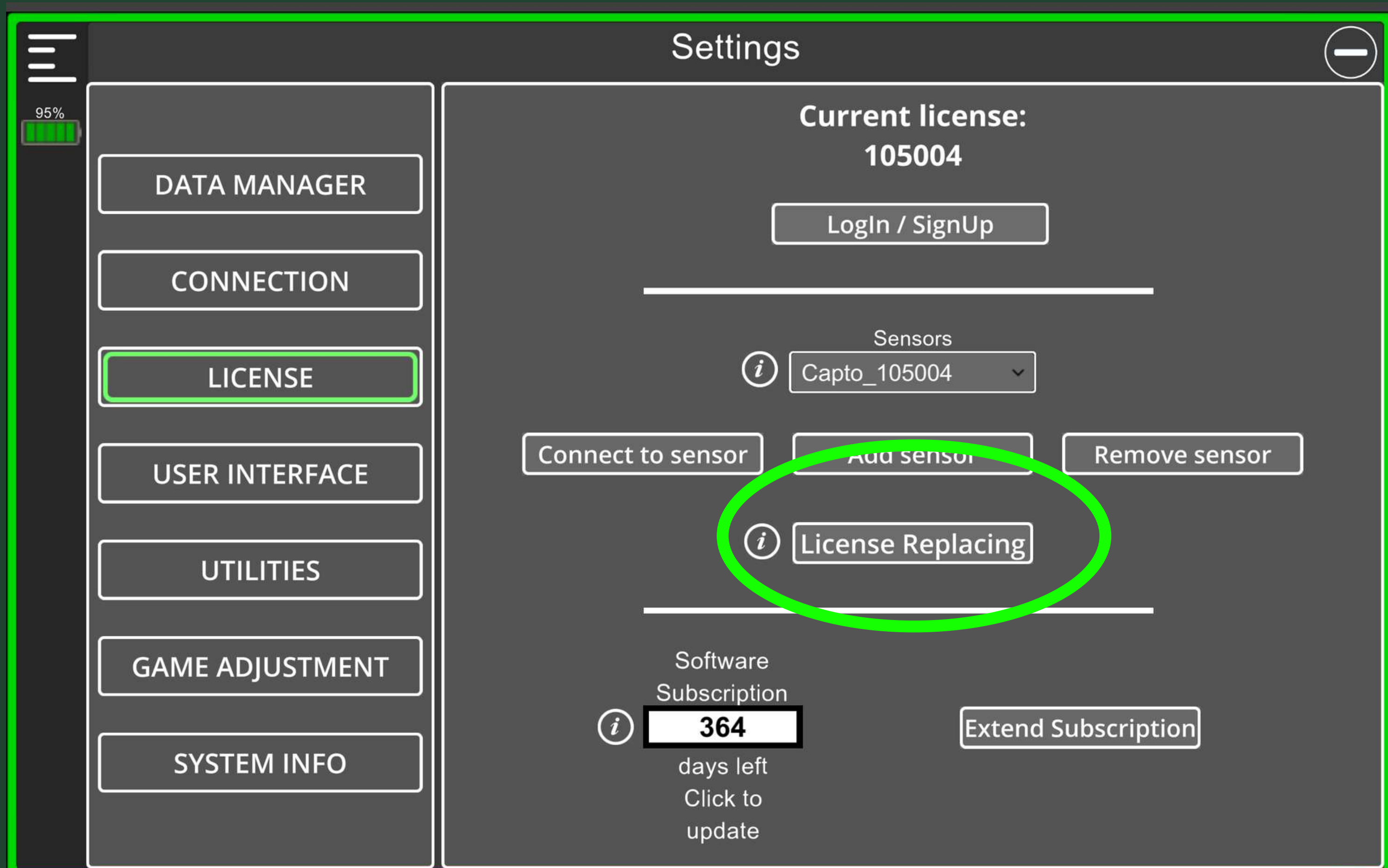
RESTART TARGET ACQUISITION

We offer the possibility to TRADE IN from Gen 1 to Gen 3
sending back to Italy the Gen 1
or to UPGRADE from Gen 2 to Gen 3 without sending back

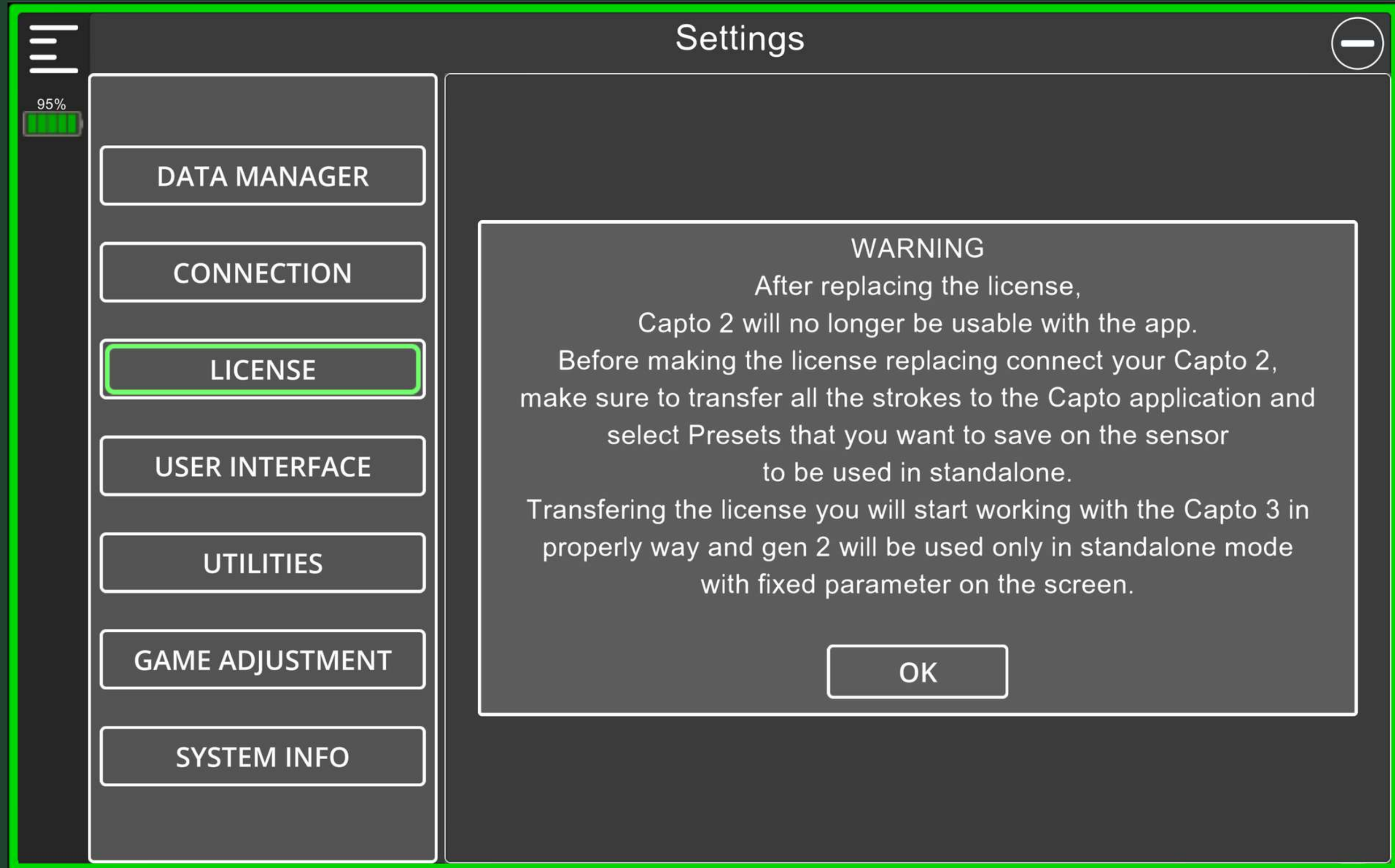
The Gen 2 sensor will remain to user in stand alone mode
So Gen 2 only for stand alone use, no more possible
to connect to the app

Price are different depending on Gen2 starting date

Replace Licence from Gen 2 to Gen 3



Replace Licence from Gen 2 to Gen 3



Replace Licence from Gen 2 to Gen 3

95%

DATA MANAGER

CONNECTION

LICENSE

USER INTERFACE

UTILITIES

GAME ADJUSTMENT

SYSTEM INFO

Settings

License Replacing
(Capto Gen 2 to Capto Gen 3)
Step1

Select Presets that you want to use in your Capto 2 in standalone mode

Connect Capto 2

Capto_103286

Connect

Capto_105004
Connected

PRESET 1

Face Change [°]

Loft Impact [°]

Track [°]

PRESET 2

Lie Change [°]

Pendulum Similarity [%]

SweetSpot Hgt Speed [km/h]

PRESET 3

Lie Change [°]

Arc [°]

Putt Kernel [cm] *

Send To Capto 2

Enjoy

